



WESTWOODLEBER

**WESTWOODLEBER**  
LET US GUIDE YOU HOME

Lloyd Place, Ware, SG12 9FS  
£529,995





## Lloyd Place, Ware, SG12 9FS

Westwood Leber are delighted to bring to the market this beautiful two bedroom Semi-Detached modern house set within this exclusive Town Centre development of just six homes. This property offers modern living accommodation throughout including a large entrance hall, downstairs w/c and an impressive bright and airy open plan living space connecting into a high specification, modern kitchen with integrated Bosch appliances and Quartz worktops, connecting to a social dining area with bi-folding doors opening out onto a landscaped rear garden.

The first floor comprises of two good size bedrooms, en-suite to master bedroom and a three-piece bathroom suite. Externally the property benefits from an excellent low maintenance and south facing rear garden with rear access and off street parking for two cars.

This property is located in the heart of Ware town centre and tucked away in an extremely private location within just a short walk from Ware Rail Station with direct links to Tottenham Hale and London Liverpool St. Having been built just over two years ago, it still benefits from having the NHBC guarantee. Internal viewing is highly recommended!



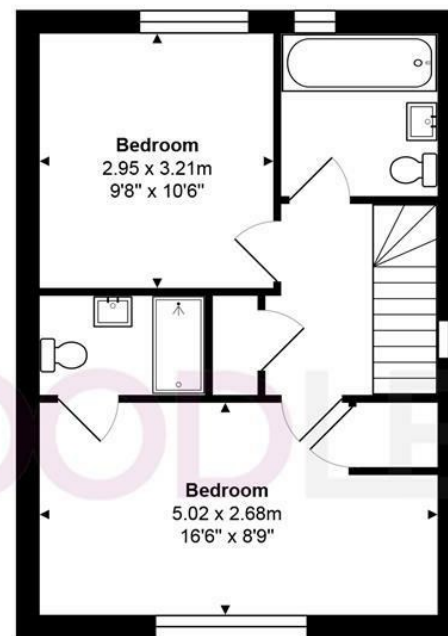


**WL WESTWOODLEBER**

**WL WESTWOODLEBER**  
LET US GUIDE YOU HOME



**Ground Floor**



**First Floor**

Total Area: approx. 77.6 m<sup>2</sup> ... 835 ft<sup>2</sup>

THE FLOORPLAN IS FOR ILLUSTRATIVE PURPOSES ONLY AND IS NOT TO SCALE.  
Measurements and features are approximate and may differ from the actual property. Verify all details independently; no liability is accepted for errors or omissions.

Property marketing provided by [www.fotomarketing.co.uk](http://www.fotomarketing.co.uk)



















**WESTWOODLEBER**

**WESTWOODLEBER**  
LET US GUIDE YOU HOME